

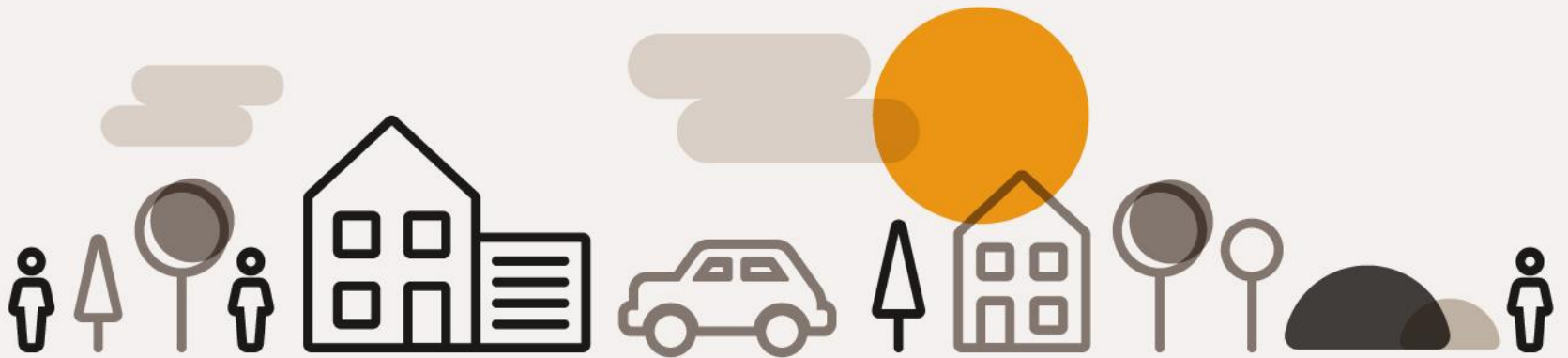
# Employability at Acis

Hannah Taylor-Dales  
Business  
Development  
Manager



*How it all started...*

*There wasn't much to see!!*



## *So what did we do...*

- *We reviewed our offer and leveraged what we could*
- *We steadily built a bank of evidence*
- *We focused on our partners & reputation*
- *We started small*



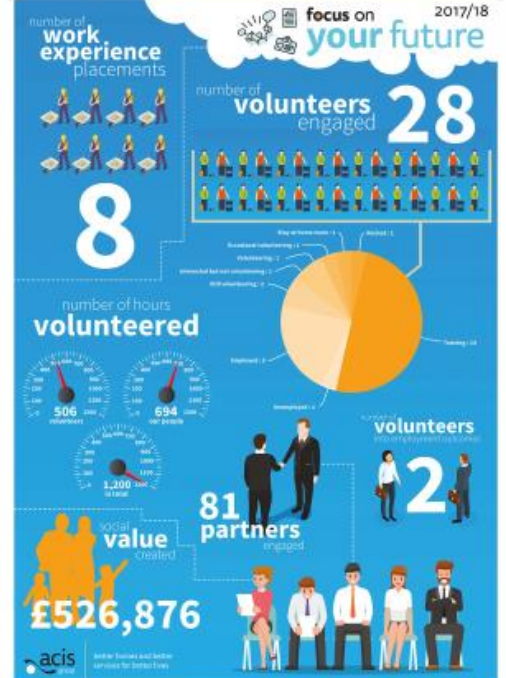
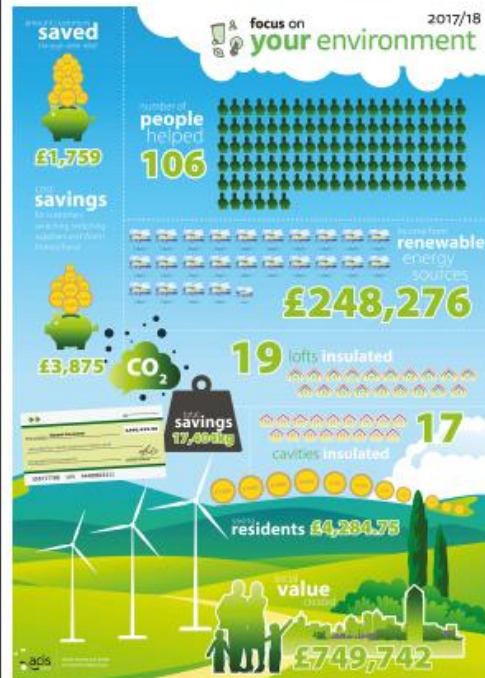
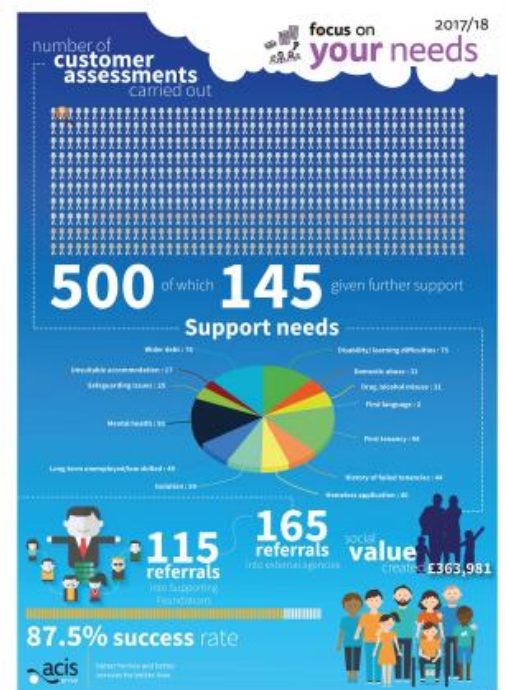
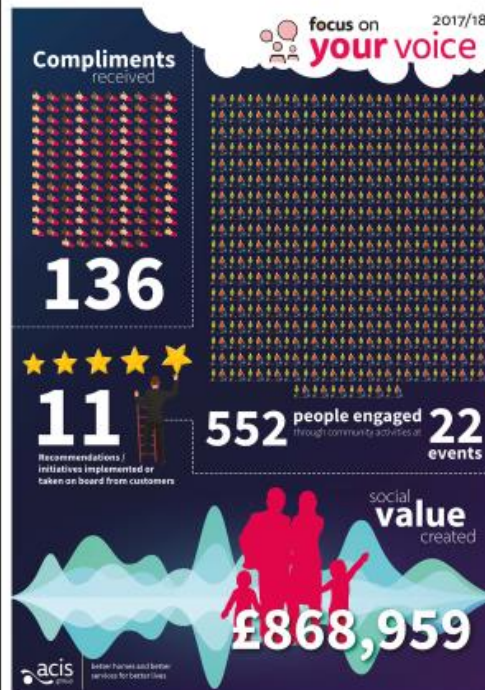
## *It started to work...*

- We started winning funding
- We were working with strategic partnerships - playing a role in leading the way for employment and skills locally
- We were making a difference to peoples lives



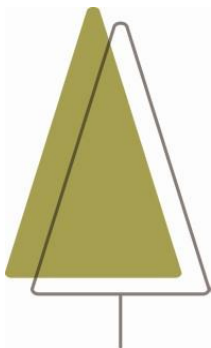
better homes and better services for better lives

*We started talking about our impact...*



# And its just grown from there...

- Supporting foundations providing pre-employability support and referrals
- Accelerate – delivering at 35% job outcome rate
- YES – engaging employers in a new and innovative way



# And now... Riverside

Our approach –

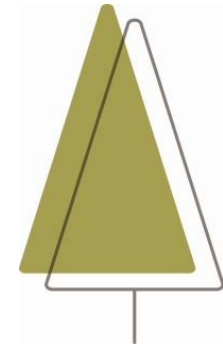
- Riverside is our specialist training and employability entity
- All housing related support stays in core
- We cross deliver where possible – using the right skills in the right places
- CIC so can tap into smaller contracts where required
- we kept the local brand but made it bigger
- Engaging people through our core housing offer and work in communities



# So whats next...

We want to keep growing

- Help more people
- In more areas
- With more needs/barriers
- Make a difference to the lives of people, communities and the local economy – supporting with recovery following the pandemic and beyond







better homes and better  
services for better lives

# *Questions and Answers*



better homes and better  
services for better lives